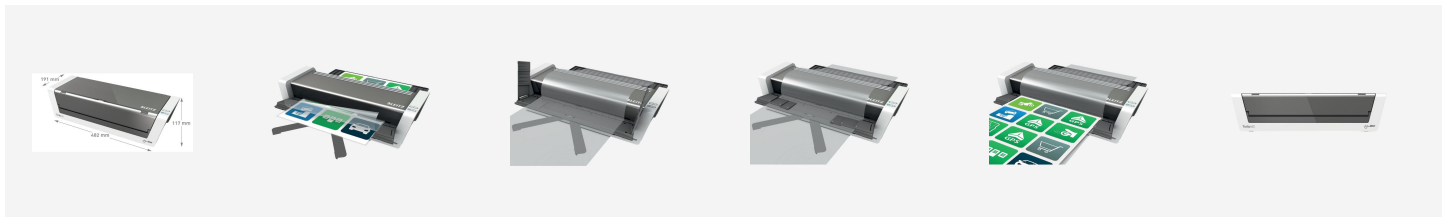




Leitz iLAM Touch 2 Turbo Laminator A3

Fully automatic A3 high speed premium laminator with unique smart sensor technology. Recognises document thickness and automatically selects the best speed. Suitable for 80-250 microns. Just 1 min. warm-up time. With unique easy feed system for convenient insertion. For intensive professional use.



Attributes

- Unique smart sensor technology - no complicate settings - perfect results!
- 1500 mm/min laminating speed - ideal for heavy office usage
- 1 min. warm-up time. No need to wait when switching between different pouch thicknesses
- Convenient insertion thanks to easy feed system and unique patented fold out flaps ensuring consistently even, high quality lamination
- Low energy consumption, auto shut-off when the device isn't used for 30 minutes
- Auto reverse function – prevents jamming when the laminator is misfed
- For 80 to 250 microns
- Takes approximately 20 seconds to laminate one 80 micron A4 sheet
- LED on/off and reverse indicator
- Includes free pouches starter kit
- 3 year guarantee, CE certified
- Recommended for use with Leitz UDT Pouches



Specifications

Number	75201000
Colour	glossy white/anthrazite
Material	ABS plastic
Dimensions (W x H x D)	482 x 125 x 400 mm
Laminating Speed	max. 1500 mm/min; variable
Temperature	max. 135° fixed
Power Supply	220/240 V AC
Pre-Heating Time	1 min
Heating System	4 from outside heated rollers
Mode of Operation	6 roller, no carrier, speed controlled
Max. Laminating Width	320 mm
Max. Laminating Thickness	0.6 mm
Pouch Thickness	80(75)-250 microns
Power Input	700 W
Dimensions (with Tray) mm	(W x H x D) mm: 526 x 143 x 401
Release Mechanism	Electric reverse button
Approx. lamination time (A4)	20 sec (A4 80 microns)
Photo friendly	yes
Guarantee	1 year on-site warranty
Package content	1
Suitable for	A3 format
Weight	7300 g
Packing unit	1
Pallet quantity	32
Minimum order quantity	1
EAN code	4002432116393